



— THE LAW OFFICE OF —
RYAN H. DECK

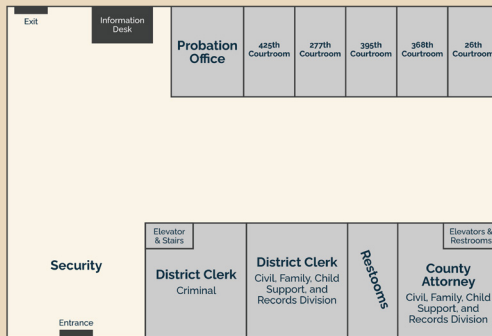
Williamson County Court Guide for Criminal Cases

The Law Office of Ryan Deck

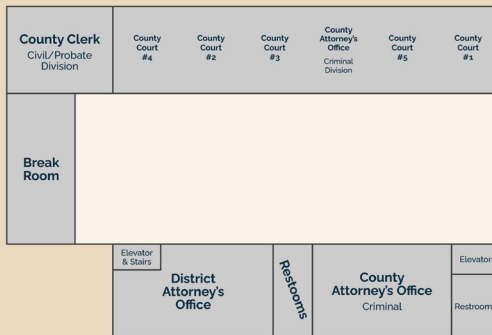
Day-Of Details

If you are charged with a crime (felony or misdemeanor) in Williamson County, you will have court settings that you'll be expected to attend. The first thing to know is: be prepared. While the initial court date may simply be a "check-in," you don't want to be late, or worse, miss the court appearance altogether.

Floorplan of the Courthouse



1st Floor

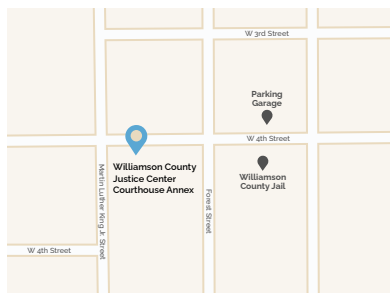


2nd Floor

Here are the essential details for the day of your court appearance.

▶ **Williamson County Justice Center Courthouse Annex**

- **Address** – 405 MLK Street, Georgetown, TX 78626



- **Parking** – There is a parking lot on the premises and a parking garage across the street from the courthouse.
- **Verify Your Court Date** – <https://judicialrecords.wilco.org/PublicAccess/default.aspx>
- **Physical Appearance** – Dress neat. That means you should wear slacks or jeans (no holes), or a professional, knee-length skirt with a wrinkle-free, collared shirt of neutral color like white, off-white, light grey, or light blue. Additionally, wear professional, closed-toe shoes. They don't have to be genuine leather or high-heels, but should be modest and easy to walk in. A common question I hear is, "Do I need to wear a tie?" The truth is: no. A simple, well-fitting tie looks nice, but it isn't required to convey respect to the judge.
- **Don't Skip It** – A missed court date will likely result in a warrant for your arrest. Your attorney may be able to avoid that scenario but there are no guarantees. Also, a missed court date could actually lead to an additional criminal charge!

Misdemeanor Charges

A misdemeanor is a less severe charge than a felony. Misdemeanor charges are often the result of a lesser-impact crime, such as a DWI. However, prior misdemeanor convictions can sometimes enhance a misdemeanor offense to a felony. In the case of multiple DWI offenses, a felony is charged on the third offense.

If you are charged with a misdemeanor, your case will be in one of the three county courts. These courts are located on the second floor of the Williamson County Courthouse.

The misdemeanor courts are:

- ▶ County Court at Law 5
 - ▶ County Court at Law 2
 - ▶ County Court at Law 3
-

Felony Charges

A felony charge is a severe criminal charge. There are several degrees of felony, but any felony conviction is extremely disadvantageous. If you are charged with a felony, your case will be in one of the three district courts located on the first floor of the Williamson County Courthouse.

The felony courts are:

- ▶ 26th District Court
- ▶ 277th District Court
- ▶ 368th District Court
- ▶ COVID Impact Court

What happens at a typical court setting? (Applies to misdemeanors and felonies.)

Many people aren't sure what to expect on their first court date if they've never been charged with a crime before. Believe me when I say the TV and media do not provide accurate pictures of this process.

Here is what typically happens in the court setting:

- ▶ Most court settings are just "check-ins." There is no need to get flustered or anxious. This check-in allows for the prosecutor and defense attorney to touch base and discuss various aspects of the case.
- ▶ Your attorney briefly discusses your case with the prosecutor while you sit in the bench-area of the courtroom. This doesn't mean fist-pounding, raised-voices negotiation. Oftentimes, much of the negotiation process happens on the phone or in the prosecutor's office.
- ▶ You will not have to speak to the judge or prosecutor.
- ▶ Police officers will not be there. Don't worry, there isn't a pair of handcuffs with your name on them just waiting to be slapped onto your wrists.
- ▶ Alleged victims and/or witnesses will not be there.*

** A court setting is open to the public so a victim or witness could be there if they choose, but they are not asked nor required to be there.*

- ▶ In any variation from the above, like a contested hearing for example, your attorney should advise you well ahead of the court date so you know what to expect. The court system, while it may seem complex, is not meant to be full of surprises. Confer with your attorney about any questions you have.

Williamson County Court Persons to Know

Expecting Judge Judy? Think again. In Williamson County, there is a judge that presides over each court. Which judge you see will depend on whether you are charged with a misdemeanor or felony and then, which court you are assigned.

Felony Courts

- ▶ COVID Impact Court
- ▶ 26th District Court Judge Donna King
- ▶ 277th District Court Judge Stacy Matthews
- ▶ 368th District Court Judge Sarah Bruchmiller

Misdemeanor Courts

- ▶ County At Law 5 Judge Will Ward
- ▶ County At Law 2 Judge Laura Barker
- ▶ County At Law 3 Judge Doug Arnold

Public Attorneys

- ▶ County Attorney Doyle "Dee" Hobbs
- ▶ District Attorney Shawn Dick





In Need of a Criminal Defense Attorney?

Ryan Deck is a board-certified criminal defense attorney – born and raised in Williamson County. His extensive knowledge of the law and court system will give you the opportunity for a favorable outcome from your charges. Not sure if you need an attorney just yet? The best offense is a good defense, and criminal defense doesn't get any better in Wilco than Ryan Deck.

Address

107 N Lampasas St, Suite 100
Round Rock, TX 78664

Phone

(512) 337-6285

Appointments

roundrockcriminaldefenselawyer.com



WILSON COUNTY
OFFICE CENTER

— THE LAW OFFICE OF —
RYAN H. DECK

405